

ECHO
TOWNHOMES
by GLENVILL

Now & Tomorrow.



* Artist impression

The Village Estate, Thornhill Park



Image from Echo Townhomes Jubilee Display home.

A bold take on contemporary living

At Echo Townhomes we are driven to create sophisticated, and outstanding homes and bring excellence within reach of hardworking Australian families. We see our homes as an integral part of their dynamic, changing lifestyles.



Count on us

At Echo Townhomes we never compromise on quality. We offer exceptional value paired with the best experience possible. We believe that the quality of our homes should be matched by the excellence of the process.



SERVICE

The service that we provide throughout the journey must be as exceptional as the home itself. Each of our team members is passionate about providing outstanding results and exceeding our customer's expectations.



QUALITY

Our stringent QA measures combined with experienced Site Managers and trade partners ensure that we deliver the highest standard townhomes.



DESIGN

We pride ourselves on our creative culture, bringing inspiration from far and wide to fulfil our unique and contemporary vision. Our commitment to offer affordable homes is matched by our desire to create stunning, exceptional family-oriented homes.



Designed for lifestyle

At Echo Townhomes our passion for striking, contemporary design is only matched by our desire to deliver homes filled with warmth and light.

Walking into one of our homes, you will be struck by the balance of design excellence and functionality throughout.

You will be greeted by clean lines, sleek surfaces and user-friendly spaces wherever you look.

An Echo Townhome comes move-in-ready complete with full turnkey solutions to make your life as easy and comfortable as possible. Enjoy tasteful landscaping, heating & cooling and quality appliances, all considered for your lifestyle.

Echo Townhomes are built for your life today and will adapt beautifully as your needs change in the future.





Image from Echo Townhomes Jubilee Display home.

Echo Townhomes at The Village Estate, Thornhill Park

This exclusive release from Echo Townhomes consists of eight, modern single storey townhomes featuring an open plan combined kitchen, living and dining. These homes all come with a clever european laundry, patio and ensuite to master bedrooms. Complete with a rear entry single or double garage, townhome living will suit any family – now and tomorrow.

Thornhill Park and the vicinity is an interesting blend of the urban elegance and the rustic rural ambience. Close to sporting facilities, superb amenities and abundant parklands, it is the perfect lifestyle for you and you family.

Select your home.

B

C

D

E

F

G

H



* Artist impression

A

Lot
326
192m²

B

Lot
329
168m²

C

Lot
330
168m²

D

Lot
331
168m²

E

Lot
332
168m²

F

Lot
333
168m²

G

Lot
334
168m²

H

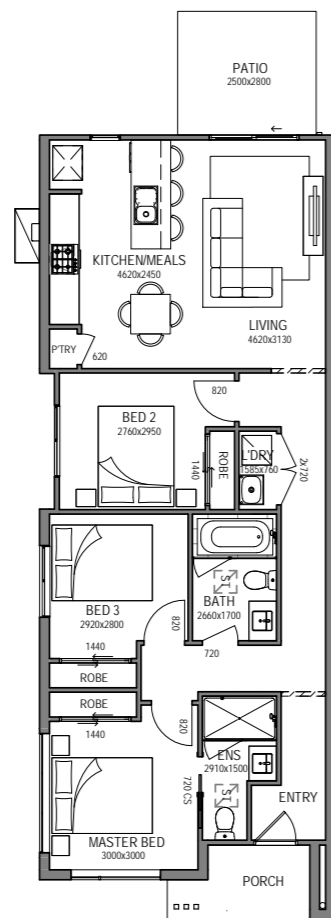
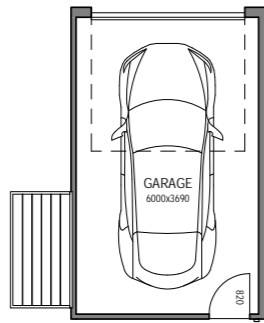
Lot
335
210m²



LOT 326



Build Area 12.5sq
Lot Area 192m²

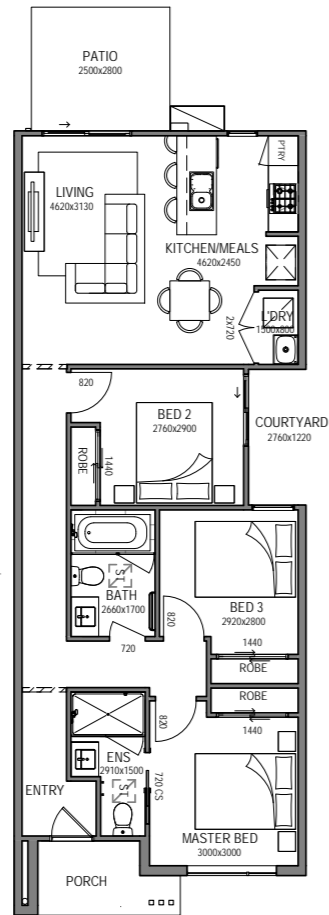
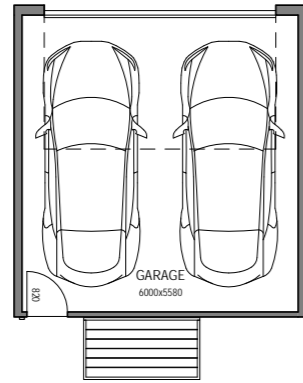


LOT 326

LOTS 329, 330, 331, 332, 333 & 334



Build Area 13.5sq
Lot Area 168m²



*Lots 330, 332 & 334 floorplan to be mirrored to suit garage crossover location.



LOT 329



LOT 330



LOT 331



LOT 333



LOT 332



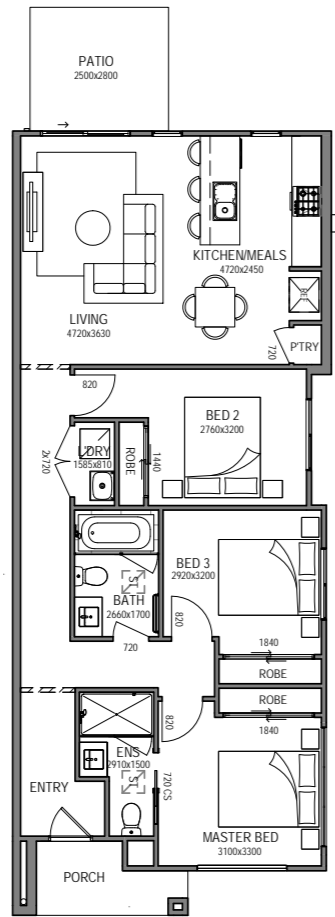
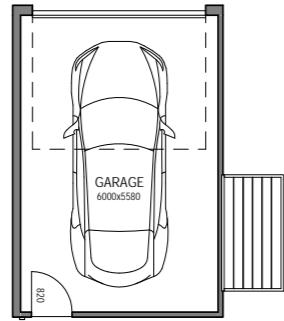
LOT 334



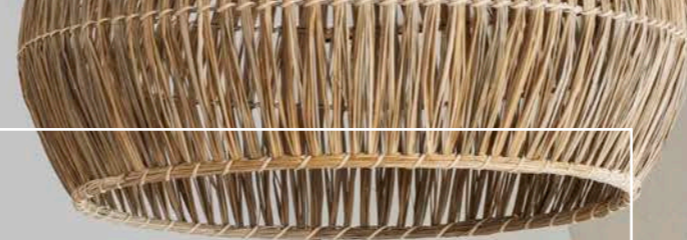
LOT 335



Build Area 13.3sq
Lot Area 210m²



LOT 326



Choose your style

Make a confident statement and strike the right balance of style and comfort in your new home. Our designs and carefully curated colour schemes are influenced by the relaxed Australian lifestyle. Simple, iconic designs that capture the feeling of now yet are designed to pass the test of time. Choose between a light or a dark interior as the perfect canvas to let your personal style take the lead.

Colour Scheme

— Light



1
LAMINEX - CLASSIC OAK 8537
Overhead cabinets in kitchen –
cabinets in bathroom, ensuite
and powder room



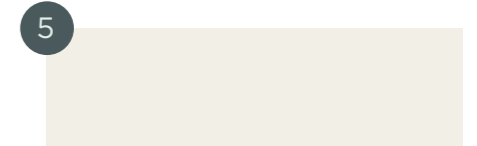
2
CAESARSTONE - WHITE SHIMMER
Kitchen, bathroom, ensuite and powder
room benchtops



3
NATIONAL TILES - WHITE GLOSS
250x400
Laid stack bond horizontal kitchen,
laundry, bathroom, ensuite and
powder room



4
BUILDERS WHITE
Ceiling



5
HAYMES - WHITE ON WHITE
Walls, architraves, skirtings
and doors (Gloss)



6
PERFECT TIMBER FLOORS,
LAMINATE - NEWHAVEN
To entry, kitchen, meals and family



ROYAL PARADE MARCH
NELSON/300 LATTE
Bedrooms and living room if applicable



Colour Scheme

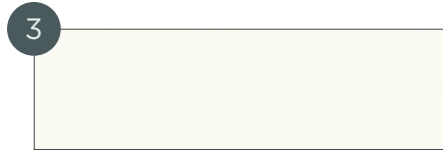
— Light



1
LAMINEX - CLASSIC OAK 8537
Overhead cabinets in kitchen -
cabinets in bathroom, ensuite
and powder room



2
LAMINEX - BRUSHED ALUMINIUM
Plinth



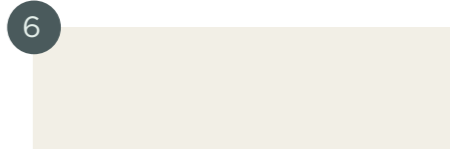
3
NATIONAL TILES - WHITE GLOSS
250x400
Laid stack bond horizontal kitchen,
laundry, bathroom, ensuite and
powder room



4
NATIONAL TILES - ATLAS LATTE
MATT 450x450
Laid stack bond in laundry, bathroom,
ensuite and powder room.



5
BUILDERS WHITE
Ceiling



6
HAYMES - WHITE ON WHITE
Walls, architraves, skirtings
and doors (Gloss)

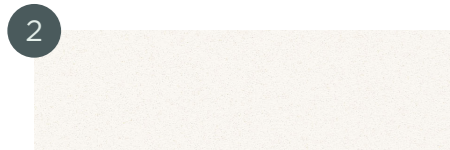


Colour Scheme

— Dark



1
LAMINEX - LUSTROUS ELM 274
Overhead cabinets in kitchen -
cabinets in bathroom, ensuite and
powder room



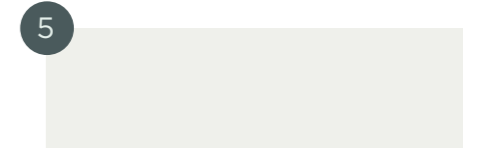
2
CAESARSTONE - SNOW
Kitchen, bathroom, ensuite and powder
room benchtops



3
NATIONAL TILES - WHITE GLOSS
250x400
Laid stack bond horizontal kitchen,
laundry, bathroom, ensuite and
powder room



4
BUILDERS WHITE
Ceiling



5
HAYMES - GREYOLOGY 1
Walls, architraves, skirtings
and doors (Gloss)



6
PERFECT TIMBER FLOORS,
LAMINATE - OTWAY
To entry, kitchen, meals and family



ROYAL PARADE
URBAN GREY - 760
Bedrooms and living room if applicable



Colour Scheme

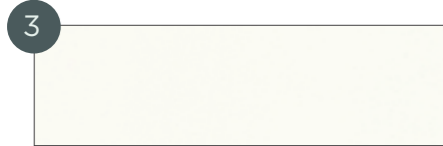
— Dark



1
LAMINEX - LUSTROUS ELM 274
Overhead cabinets in kitchen -
cabinets in bathroom, ensuite and
powder room



2
SUPPLIER - BRUSHED ALUMINIUM
Plinth



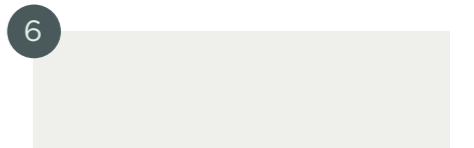
3
NATIONAL TILES - WHITE GLOSS
250x400
Laid stack bond horizontal kitchen,
laundry, bathroom, ensuite and
powder room



4
NATIONAL TILES - ATLAS GREIGE
MATT 450x450
Laid stack bond in laundry, bathroom,
ensuite and powder room



5
BUILDERS WHITE
Ceiling



6
HAYMES - GREYOLOGY 1
Walls, architraves, skirtings
and doors (Gloss)



Inclusions



TURNKEY



STRUCTURAL WARRANTY



HEATING & COOLING



LANDSCAPING



QUALITY APPLIANCES

GENERAL

- Member of MBA & HIA
- Insurance with home owners warranty
- 7 year structural guarantee

PRELIMINARIES

- 6 star energy rating report
- Plans & specifications
- Engineering drawings & building permit

SITE WORKS

- Concrete waffle slab & pump allowance
- Allowance for balanced cut/fill up to 300mm
- Termite treatment (Part A & B)
- Temporary fencing
- Roof guard rail/fall protection
- Crushed rock access drive

CONNECTIONS

- Stormwater, sewer, gas & underground power included
- Telephone & electricity standard connection fees by owner

FRAMING

- Prefabricated pine wall frames
- Prefabricated pine roof trusses

CEILING HEIGHT

- 2440mm (8'') high to first floor of double storey
- 2590mm high to all single storey and ground floor of double storey

PLUMBING

- Concealed plumbing
- Colorbond fascias, gutters & downpipes

BOUNDARY WALL CONSTRUCTION

- Hebel boundary wall system

ROOFING

- Colorbond roof from builders' standard range

WINDOWS

- Feature windows to front of home & aluminum windows to balance, openable skylight (where applicable)
- Locks to all openable windows
- Flyscreens to all openable windows

WINDOW COVERINGS

- Holland blinds to all windows & sliding doors (excluding front door sidelights)

INSULATION

- R2.5 batts & sisilation to external walls
- R3.5 to ceilings

HOT WATER SERVICE

- 20 litre continuous flow hot water unit

HEATING AND COOLING

- Split cycle heating & cooling unit to family & master
- Panel heaters to all bedroom and living areas

PLASTERWORK

- 75mm cove cornice throughout

ARCHITRAVES AND SKIRTINGS

- 67mm MDF skirtings
- 67mm MDF architraves

CUPBOARDS

- Robes with melamine shelf & hanging rail
- Linen cupboard with 4 melamine shelves
- Broom cupboard with melamine shelf
- Coat cupboard with melamine shelf & hanging rail (house specific)

DOORS

- Feature glass insert solid door to front entry
- Glazed sliding external door
- Flush panel internal doors
- Flyscreen doors to laundry, family & rumpus (house specific)

DOOR FURNITURE

- Chrome entrance set to front door & rear garage door
- Deadbolt to front door & garage internal access door
- Chrome levers to room doors
- Chrome bar pulls to all cupboard doors
- Weatherstrip to front door & internal access door to garage door stops

TILES

- Ceramic floor tiles from your chosen colour scheme range to bathroom, WC, ensuite & laundry.
- Ceramic wall tiles from your chosen colour scheme range to kitchen, laundry & bathroom vanity splashbacks, shower recesses & above bath.

FLOORING

- Timber look laminate flooring to entry, family, kitchen, meals
- Carpet from your chosen colour scheme range to all bedrooms, robes, bedroom passage, living & rumpus (house specific)

PAINTS

- Solagard low sheen to exterior garage timber door (2 coats)
- Gloss enamel to front door (2 coats)
- Low sheen acrylic to interior walls & ceiling (2 coats)
- Gloss enamel to interior woodwork & doors (2 coats)

ELECTRICAL

- Double power points throughout
- LED downlights throughout (batten point to garage)
- Single external flood light with sensor
- TV point to family room, master & living (if applicable)
- Digital ready TV antenna
- 1 internet ready (NBN/Opticomm)
- Telephone point to kitchen & bedroom 1
- Smoke detectors (direct wired with battery back up)

KITCHEN

- Reconstituted stone benchtops with 20mm square edge (from standard range)
- Pantry with 4 melamine shelves
- 600mm dishwasher
- 600mm multifunction electric oven (stainless steel)
- 600mm gas cooktop (stainless steel)
- 600mm integrated rangehood (stainless steel)
- Double bowl sink & drainer
- Chrome mixer tap

LAUNDRY

- Stainless steel trough & white acrylic cabinet
- Hot & cold washing machine connections
- Chrome mixer tap

BATHROOM AND ENSUITE

- Reconstituted stone benchtops with 20mm square edge (from standard range)
- Polished edge mirror to full width of vanities
- Square feature basins (white with chrome waste & overflow)
- Toilet suites (white with chrome flush button)
- bath (white) to bathroom
- Tiled shower base & semi framed glass pivot door with polished silver frame
- Chrome mixer taps
- Double towel rail, toilet roll holder & soap dish

GARAGE

- Colorbond panel lift door
- Remote control to garage door (includes 2 no. handsets)
- Internal access door (where applicable)

LANDSCAPING

- As per developer requirements (front & rear)
- Garden tap to front & rear

FENCING

- Timber paling/Colorbond fence including wing fence & gate to suit estate design guidelines

PAVING

- Exposed aggregate driveway, front path & rear outdoor living area

LETTERBOX AND CLOTHES LINE

- Pre-cast concrete letterbox with colour to match house colours
- Colorbond fold out clothesline to rear yard





Now & Tomorrow.

CONTACT:
ENQUIRIES@ECHOTOWNHOMES.COM.AU
echotownhomes.com.au

While best endeavours have been used to provide information in this publication that is true and accurate, Echo Townhomes, its consultants, agents and related entities accept no responsibility and disclaim all liability in respect to any errors or inaccuracies it may contain. Prospective purchasers should make their own enquiries to verify the information contained herein.